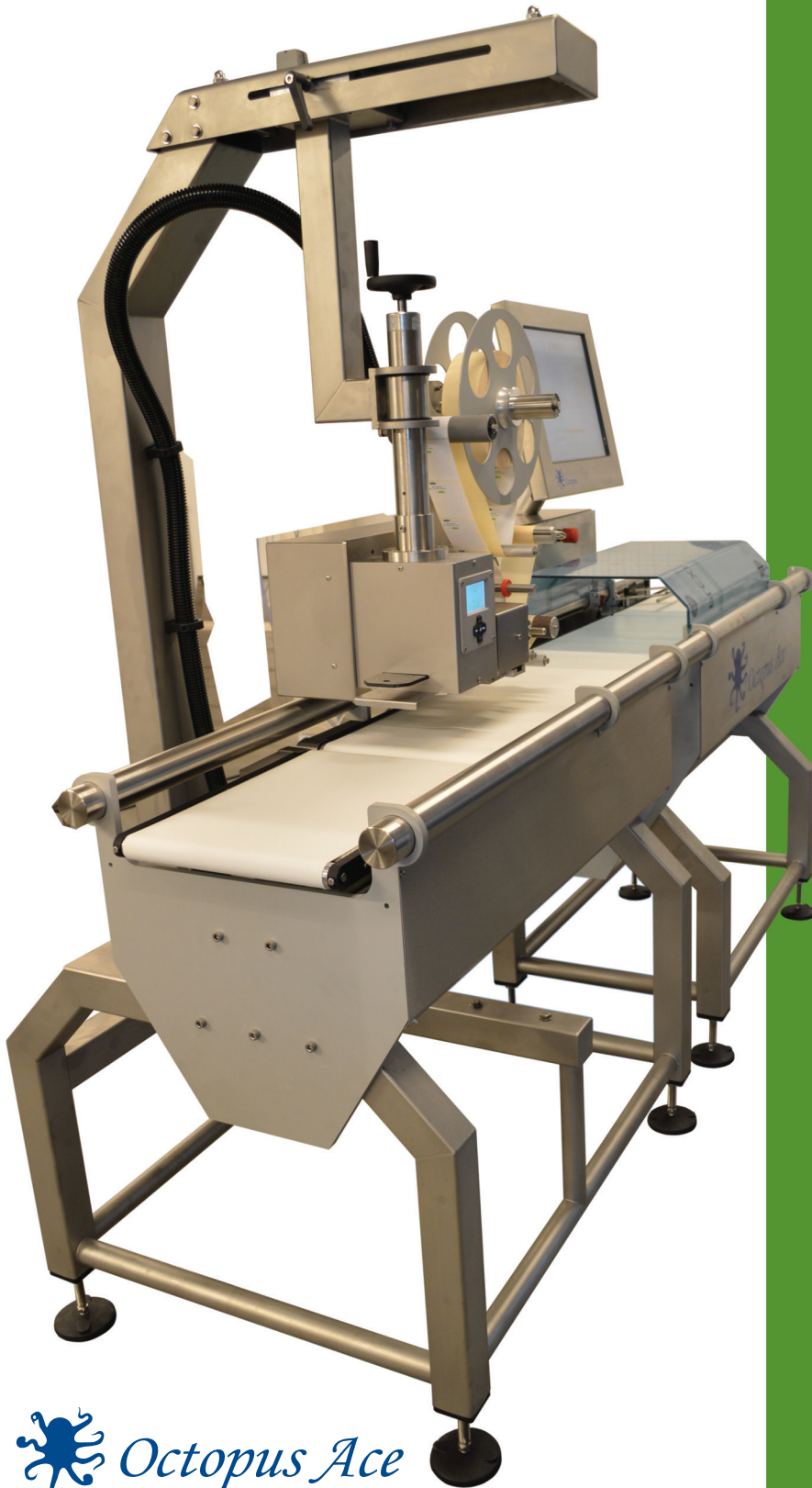


OCTOPUS ACE

IN-MOTION WEIGH PRICE LABELER



 *Octopus Ace*

- Advanced Electromagnetic Force Restoration (EMFR) weighing technology
- User friendly 19" "Icon Driven" touch screen
- Label design Background Image Support (BIS)
- Label and product images on screen
- Full product traceability
- GS1 DataBar and Quantitative Ingredient Declarations in accordance with the latest statutory labeling requirements
- Windows True Type Fonts
- Nexus label design software

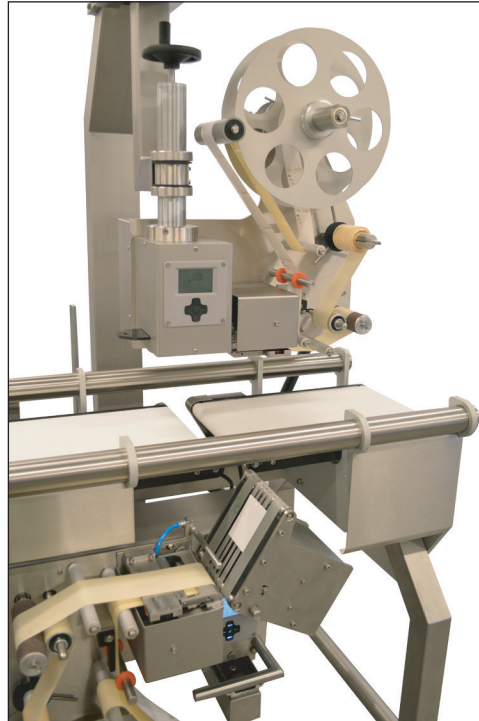
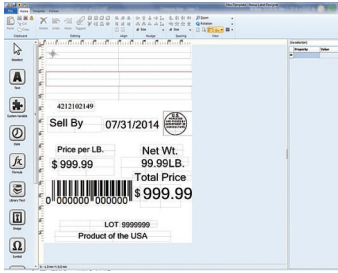
*Exclusive USA distribution
from Holland by*

PACKAGING
SOLUTIONS INC

704-471-2200
591 Bryant Blvd., Rock Hill, SC 29732
Email: sales@octopusace.com

Octopus Ace

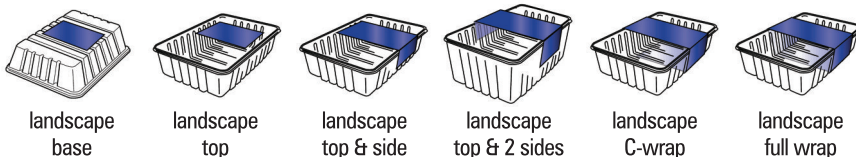
The new standard in automatic weigh price labeling equipment. Innovative software, in combination with the most advanced weighing and printing technologies, ensure the machines fully meet the processing requirements of today and for the future!



- Modular design and full stainless steel construction
- Advanced Electromagnetic Force Restoration (EMFR) weighing technology for accurate weighing up to 100 ppm (ideal for family size trays)
- Supports multiple top and base printer(s) with advanced, proven, print and apply technology
- Removable conveyors for easy cleaning
- Variable belt speeds programmable by product
- User friendly 19" "Icon Driven" touch screen to call up relevant product and operational information
- Label and product images are displayed per product on screen for quality assurance purposes
- Traceability by pack number, product, lot, user and machine ID
- Machine status, production rates, totals and diagnostics directly accessible on screen
- Configurable access control and language preferences by user
- Linking with (ERP) systems through an open interface using the latest (XML) technology
- Fully integrated NEXUS label formatting software including:
 - ✓ Background Image Support (BIS), label image files or scanned labels can be used as a background to assist in the design of labels
 - ✓ Various editing tools to assist label design
 - ✓ Full support of Windows TrueType Fonts
 - ✓ Print text, system variables, date / time, images, symbols, shapes, HTML text, linear and 2D bar codes including GS1 DataBar
 - ✓ Test print on label printer or office printer



Ravenwood [Linerless Label Application Link](#)



**Exclusive USA distribution
from Holland by**



704-471-2200
591 Bryant Blvd., Rock Hill, SC 29732
Email: sales@octopusace.com