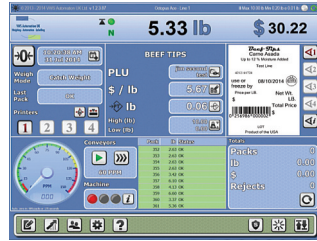




INDUSTRIAL PC BASED SYSTEM FOR WEIGHING, LABELING PRODUCTS AND RECORDING PRODUCTION DATA FOR TRACEABILITY

Octopus Terminal

- PC Based System with 19" Color Touchscreen
- Single scale interface with up to 4 printer interfaces
- Stainless steel construction
- Octopus One Application Software with Nexus Lite Label design Software
- Ethernet Network Interface; Power 115 volt 60 Hz



Scales

- 400mm x 300mm platform size
- 20lb. x 0.01lb., 30lb x 0.01lb, 60lb x 0.02lb capacity
- 500mm x 400mm platform size
- Connected to Octopus Terminal; stainless steel construction; other options available by request

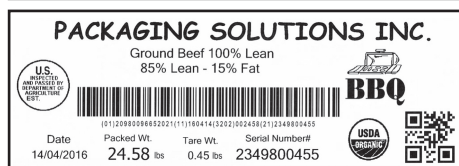
Printers

- CAB A4.3+ Printer with Direct Thermal & Thermal Transfer
- 300 dpi resolution, thick film printhead
- Up to 105mm print width and up to 150mm/s print speed
- Labels up to 116mm wide, backing paper 120mm wide
- Maximum label reel diameter 205 mm: Label core diameter 38mm to 100mm
- CAB A4+ Printer with Direct Thermal & Thermal Transfer
- 300dpi resolution, thin film printhead



A4+ Printer

- Up to 105mm print width and up to 250mm/s print speed
- Labels up to 116mm wide, backing paper 120mm wide
- Maximum label reel diameter 205mm
- Label core diameter 38mm to 100mm



Label Design

- Integrated NEXUS LITE software
- Background image support (BIS) for easy label layout
- Various editing tools :
- Full support for Windows TrueType Fonts
- Field types - text, system variables, date/time, images, symbols, HTML text, Rich Text, Formulas, bar codes including GS1 DataBar, full range of 1D and 2D symbologies
- Software maintained to latest GS1 General Specification
- Nutritional panel capability in full compliance with EC requirements

Batching Software (Option)

- Software installed on the Octopus One
- Allows configuration of 1 to 3 levels of Totals, normally Box, Pallet & Consignment
- Within every PLU each Total level can have its own independent Nexus label template assigned allowing different label layouts for different Total levels
- Targets for each level can be assigned on the basis of Count or Weight
- Printing of the Totals labels can be triggered automatically upon breaching the Target, or manually triggered
- Current status against Targets are shown graphically on the screen of the Octopus One

Networking (Option)

- Fully compatible with VWS Cortex Network Software Application
- Machine protocols controlling all aspects of Console Operation and Production Data Collection
- Custom ERP Integration using machine protocols
- Optional Software Module to allow Production Data collection and population of Microsoft SQL Server Database

Other Options

- Handheld Barcode Scanner (for Traceability data input, PLU selection etc.)
- Plug In customizations (e.g. Manifest reports)



Optional Scanner

Honeywell

Exclusive USA distribution from Holland by



704-471-2200 • 591 Bryant Blvd. • Rock Hill, SC 29732 • Email: sales@octopusace.com

